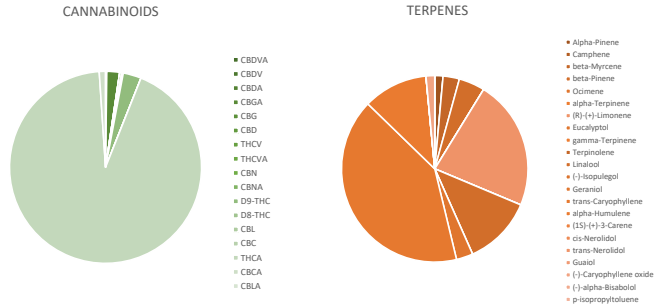


Specimen #: 0720-M.PHS

**Fang! - Pressed Hash**

**Client Name & License** Harmony Lafayette MC000197-MM000116  
**Sample Type** Concentrate  
**Licensee Contact** Adam Johnstone  
**Licensee Address** Lafayette, NJ 07848  
**Sample Unit Count** 2.63g  
**Total Unit Count** 107.95g  
**Customer Lot #** L6.FNG.20230720.M.PHS  
**Metric ID** 163027224 MCH0456  
**Parent Pkg ID** L6.FNG.20230720.M.PHS  
**Sampled By & Date** 28JUL2023 BH  
**Date Received & Tested** 7/28/2023


**SUMMARY**

Water Activity	NOT TESTED	NOT TESTED	Heavy Metals	PASSED
Moisture	NOT TESTED	NOT TESTED	Mycotoxins	PASSED
Pesticides	PASSED		Microbials	PASSED
Foreign Material	PASSED		Solvents	PASSED

CANNABINOIDS - TM 111			
Analyte	LOQ	20.32% Mass	TOTAL Mass
		%	mg/g
CBDVA	0.01	ND	0.00
CBDV	0.01	ND	0.00
CBDA	0.01	0.04	0.43
CBGA	0.01	0.44	4.38
CBG	0.01	ND	0.00
CBD	0.01	ND	0.00
THCV	0.01	ND	0.00
THCVa	0.01	0.07	0.67
CBN	0.01	ND	0.00
CBNA	0.01	0.05	0.55
D9-THC	0.01	0.62	6.21
D8-THC	0.01	ND	0.00
CBL	0.01	ND	0.00
CBC	0.01	ND	0.00
THCA	0.01	18.88	188.79
CBCA	0.01	0.21	2.14
CBLA	0.01	ND	0.00

TERPENES - TM 102			
Analyte	LOQ	0.880% Mass	TOTAL Mass
		%	mg/g
Alpha-Pinene	0.0125	0.013	0.13
Camphene	0.0125	<LOQ	0.00
beta-Myrcene	0.0125	0.025	0.25
beta-Pinene	0.0125	0.040	0.40
Ocimene	0.0125	ND	0.00
alpha-Terpinene	0.0125	ND	0.00
(R)-(+)-Limonene	0.0125	0.198	1.98
Eucalyptol	0.0125	ND	0.00
gamma-Terpinene	0.0125	ND	0.00
Terpinolene	0.0125	ND	0.00
Linalool	0.0125	0.106	1.06
(-)-Isopulegol	0.0125	ND	0.00
Geraniol	0.0125	0.025	0.25
trans-Caryophyllene	0.0125	0.361	3.61
alpha-Humulene	0.0125	0.099	0.99
(1S)-(+)-3-Carene	0.0125	ND	0.00
cis-Nerolidol	0.0125	ND	0.00
trans-Nerolidol	0.0125	ND	0.00
Guaiaol	0.0125	ND	0.00
(-)-Caryophyllene oxide	0.0125	0.013	0.13
(-)-alpha-Bisabolol	0.0125	<LOQ	0.00
p-isopropyltoluene	0.0125	ND	0.00

**RESIDUAL SOLVENTS - TM 110**

Analyte	Result	LOQ	Action Limit	Unit of Measure
Benzene	ND	0.02	2	ppm
Butane	ND	5.00	5000	ppm
Ethanol	ND	28.00	5000	ppm
Heptanes	ND	28.00	5000	ppm
n-Hexane	ND	3.48	290	ppm
Propane	ND	2.00	5000	ppm
Toluene	ND	10.68	890	ppm
Total Xylenes	ND	52.08	2170	ppm

**HEAVY METALS - TM 104**

Analyte	Result	LOQ	Action Limit	UOM
Arsenic	ND	0.001	0.4	ppm
Cadmium	ND	0.001	0.4	ppm
Chromium	0.01	0.001	0.6	ppm
Lead	0.00	0.001	1	ppm
Mercury	ND	0.001	0.2	ppm

**MYCOTOXINS - TM 100**

Analyte	Result	LOQ	Action Limit	UOM
Aflatoxin B1	ND	1	20	oob
Aflatoxin B2	ND	1	20	ppb
Aflatoxin G1	ND	1	20	ppb
Aflatoxin G2	ND	1	20	ppb
Ochratoxin A	ND	2	20	ppb

**MICROBIALS - TM 101 & 112**

Analyte	Result	LOQ	Action Limit	UOM
Total Aerobic	81,247	N/A	100,000	CFU/g
Total Yeast and Mold	0	N/A	10,000	CFU/g
E. Coli	NEG	N/A	0	CFU/g
Salmonella	NEG	N/A	0	CFU/g

**VITAMIN E ACETATE - TM 113**

Analyte	LOQ	Result	Unit of Measure
Vitamin E Acetate	450	ND	ppm

**PESTICIDES (in ppm) - TM 100**

Analyte	Result	LOQ	Action Limit	Analyte	Result	LOQ	Action Limit	Analyte	LOQ	Action Limit
Abamectin	ND	0.010	0.5	Dimethoate	ND	0.010	0.5	Naled	0.010	0.5
Acetamiprid	ND	0.010	0.2	Ethephon	ND	0.050	0.2	Oxamyl	0.010	0.2
Aldicarb	ND	0.010	0.4	Etoazole	ND	0.010	0.4	Paclobotrazol	0.010	0.4
Ancymidol	ND	0.010	0.2	Fenpyroximate	ND	0.010	0.2	Permethrin, cis	0.010	0.2
Azoxystrobin	ND	0.010	0.2	Figronil	ND	0.010	0.2	Permethrin, trans	0.010	0.2
Bifenazate	ND	0.010	0.2	Fonicamid	ND	0.010	0.2	Phosmet	0.010	0.2
Bifenthrin	ND	0.010	0.2	Fludioxonil	ND	0.010	0.2	Piperonyl butoxide	0.010	0.2
Boscalid	ND	0.010	0.4	Flurprimidol	ND	0.010	0.4	Propiconazole	0.010	0.4
Carbaryl	ND	0.010	0.2	Hexythiazox	ND	0.010	0.2	Pyrethrins	0.004	0.2
Carbofuran	ND	0.010	0.2	Imazalil	ND	0.010	0.2	Spinosyn A	0.007	0.2
Chlorantraniliprole	ND	0.010	0.2	Imidacloprid	ND	0.010	0.2	Spinosyn D	0.002	0.2
Chlorpyrifos	ND	0.010	0.2	Kresoxim-methyl	ND	0.010	0.2	Spiromesifen	0.010	0.2
Clofentazine	ND	0.010	0.2	Malathion A	ND	0.010	0.2	Spirotetramat	0.010	0.2
Cyfluthrin	ND	0.010	1.0	Metaxalyl	ND	0.010	1.0	Thiacloprid	0.010	1.0
Dichlorvos	ND	0.010	0.1	Methiocarb	ND	0.010	0.1	Thiamethoxam	0.010	0.1
Daminozide	ND	0.010	1.0	Methomyl	ND	0.010	1.0	Trifloxystrobin	0.010	1.0
Diazinon	ND	0.010	0.2	Myclobutanil	ND	0.010	0.2			

Sample collection methods and the uncertainty of measurement associated with results reported in this certificate are available upon request. Sampled in accordance with PRO.S.1060 Sampling NJ. Unless otherwise indicated, results were reviewed and verified by the Lab Director, and issuance of this CoA was authorized by the Lab Director. Action limits except moisture content set according to New Jersey CRC; moisture content 5-15%; water activity <0.65; foreign matter <5% w/w. Results valid only for the exact material sampled and analyzed. Laboratory testing begins within twelve hours of accepted receipt within the laboratory, and stored in a cool, dry place if not analyzed immediately. Moisture Content performed by TM 105, Water Activity performed by TM 106 and Foreign Matter performed by TM 107. Abbreviation Key: ND = Not Detected, LOD = Limit of Detection, LOQ = Limit of Quantitation, ppb = parts per billion, ppm = parts per million, UOM = unit of measure, NEG = Negative, LOD = LOQ/3.

Approved By: *Tetyana Fonarova* 01-Aug-2023

