

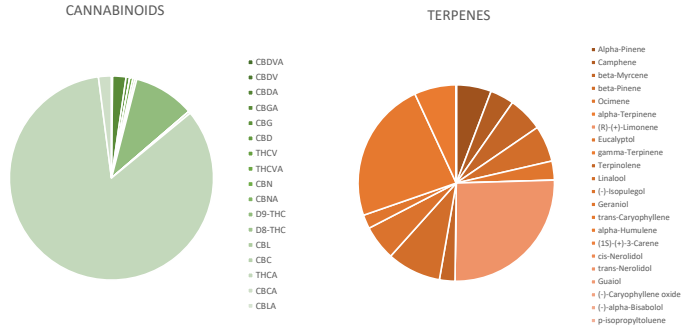
Specimen #: 0605-605.H

## Pie Hole

**Customer Name:** Harmony Dispensary  
**Sample Type:** Flower  
**Licensee Contact:** Adam Johnstone  
**Licensee Address:** Secaucus, NJ 07094  
**Sample Weight:** 7.51g  
**Total Batch Weight:** 305g  
**Customer Lot #:** S1.PHL.20230605.H  
**Metrc ID:** 161267422 MCH0438  
**Parent Pkg ID:** S1.PHL.20230605.H  
**Sampled By & Date:** 14Jul2023 BH  
**Date Received:** 7/14/2023

## SUMMARY

Water Activity	<b>PASSED</b>	<b>0.6149</b>	Heavy Metals	<b>PASSED</b>
Moisture	<b>PASSED</b>	<b>13.18%</b>	Mycotoxins	<b>PASSED</b>
Pesticides	<b>PASSED</b>		Microbials	<b>PASSED</b>
Foreign Material	<b>PASSED</b>			



CANNABINOIDS		26.15%	TOTAL
Analyte	LOQ	Mass %	Mass mg/g
CBDVA	0.01	ND	0.00
CBDV	0.01	ND	0.00
CBDA	0.01	0.05	0.48
CBGA	0.01	0.55	5.54
CBG	0.01	0.15	1.51
CBD	0.01	ND	0.00
THCV	0.01	ND	0.00
THCVA	0.01	0.13	1.30
CBN	0.01	0.08	0.84
CBNA	0.01	0.08	0.78
D9-THC	0.01	2.53	25.34
D8-THC	0.01	ND	0.00
CBL	0.01	ND	0.00
CBC	0.01	0.09	0.91
THCA	0.01	21.94	219.40
CBCA	0.01	0.54	5.35
CBLA	0.01	ND	0.00

TERPENES		1.428%	TOTAL
Analyte	LOQ	Mass %	Mass mg/g
Alpha-Pinene	0.0125	0.083	0.83
Camphene	0.0125	0.056	0.56
beta-Myrcene	0.0125	0.082	0.82
beta-Pinene	0.0125	0.085	0.85
Ocimene	0.0125	0.045	0.45
alpha-Terpinene	0.0125	ND	0.00
(R)-(+)-Limonene	0.0125	0.367	3.67
Eucalyptol	0.0125	ND	0.00
gamma-Terpinene	0.0125	ND	0.00
Terpinolene	0.0125	0.036	0.36
Linalool	0.0125	0.127	1.27
(-)-Isopulegol	0.0125	0.082	0.82
Geraniol	0.0125	0.033	0.33
trans-Caryophyllene	0.0125	0.334	3.34
alpha-Humulene	0.0125	0.099	0.99
(1S)-(+)-3-Carene	0.0125	ND	0.00
cis-Nerolidol	0.0125	ND	0.00
trans-Nerolidol	0.0125	ND	0.00
Guaiol	0.0125	ND	0.00
(-)-Caryophyllene oxide	0.0125	ND	0.00
(-)-alpha-Bisabolol	0.0125	ND	0.00
p-isopropyltoluene	0.0125	<LOQ	0.00

## HEAVY METALS

Analyte	Result	Action Limit	UOM
Arsenic	<LOQ	0.4	ppm
Cadmium	<LOQ	0.4	ppm
Chromium	<LOQ	0.6	ppm
Lead	<LOQ	1	ppm
Mercury	<LOQ	0.2	ppm

## MYCOTOXINS

Analyte	Result	Action Limit	UOM
Aflatoxin B1	ND	20	ppb
Aflatoxin B2	ND	20	ppb
Aflatoxin G1	ND	20	ppb
Aflatoxin G2	ND	20	ppb
Ochratoxin A	ND	20	ppb

## MICROBIALS

Analyte	Result	Action Limit	UOM
Total Aerobic	0	100,000	CFU/g
Total Yeast and Mold	0	10,000	CFU/g
E. Coli	Neg	0	CFU/g
Salmonella	Neg	0	CFU/g

## PESTICIDES (in ppm)

Analyte	Result	Action Limit	Analyte	Result	Action Limit	Analyte	Result	Action Limit
Abamectin	ND	0.5	Dimethoate	ND	0.2	Naled	ND	0.5
Acetamiprid	ND	0.2	Ethephon	ND	1.0	Oxamyl	ND	1.0
Aldicarb	ND	0.4	Etoxazole	ND	0.2	Paclbutrazol	ND	0.4
Ancymidol	ND	0.2	Fenpyroximate	ND	0.5	Permethrin, cis	ND	0.5
Azoxystrobin	ND	0.2	Fipronil	ND	0.4	Permethrin, trans	ND	0.5
Bifenazate	ND	0.2	Flonicamid	ND	1.0	Phosmet	ND	0.2
Bifenthrin	ND	0.2	Fludioxonil	ND	0.4	Piperonyl butoxide	ND	1.0
Boscalid	ND	0.4	Flurprimidol	ND	0.2	Propiconazole	ND	0.4
Carbaryl	ND	0.2	Hexythiazox	ND	1.0	Pyrethrins	ND	1.0
Carbofuran	ND	0.2	Imazalil	ND	0.2	Spinosyn A	ND	0.2
Chlorantraniliprole	ND	0.2	Imidacloprid	ND	0.4	Spinosyn D	ND	0.2
Chlorpyrifos	ND	0.2	Kresoxim-methyl	ND	0.4	Spiromesifen	ND	0.2
Clofentezine	ND	0.2	Malathion A	ND	0.2	Spirotetramat	ND	0.2
Cyfluthrin	ND	1.0	Metalaxyl	ND	0.2	Thiacloprid	ND	0.2
Dichlorvos	ND	0.1	Methiocarb	ND	0.2	Thiamethoxam	ND	0.2
Daminozide	ND	1.0	Methomyl	ND	0.4	Trifloxystrobin	ND	0.2
Diazinon	ND	0.2	Myclobutanil	ND	0.2			

Sample collection methods and the uncertainty of measurement associated with results reported in this certificate are available upon request. Sampled in accordance with PRO.S.106D Sampling NJ. Unless otherwise indicated, results were reviewed and verified by the Lab Director, and issuance of this CoA was authorized by the Lab Director. " " Action limits set according to New Jersey CRC, including <0.65 for water activity. Results valid only for the exact material sampled and analyzed. Specimens stored in a cool, dry place if not analyzed immediately. " Abbreviation Key: ND = Not Detected, LOD = Limit of Detection, LOQ = Limit of Quantitation, ppb = parts per billion, ppm = parts per million, UOM = unit of measure, NEG = Negative.

Approved By: *Tetyana Fonarova* 17-Jul-2023

